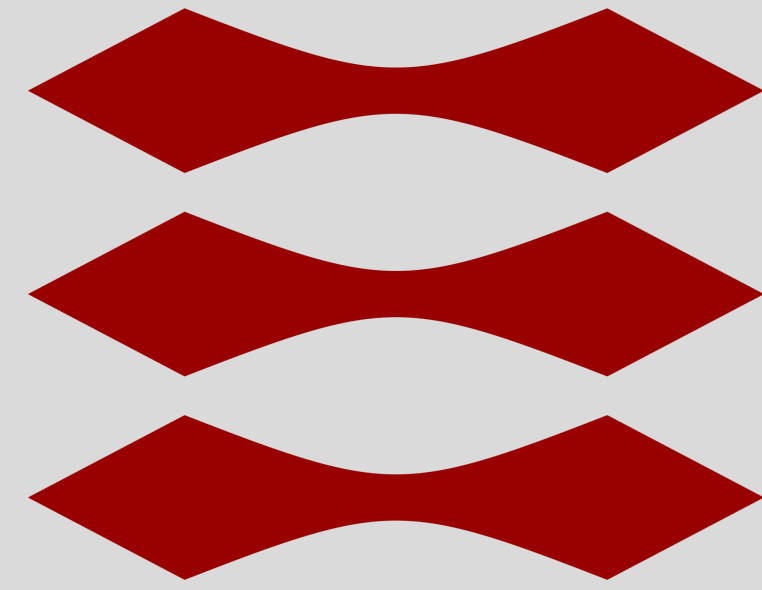
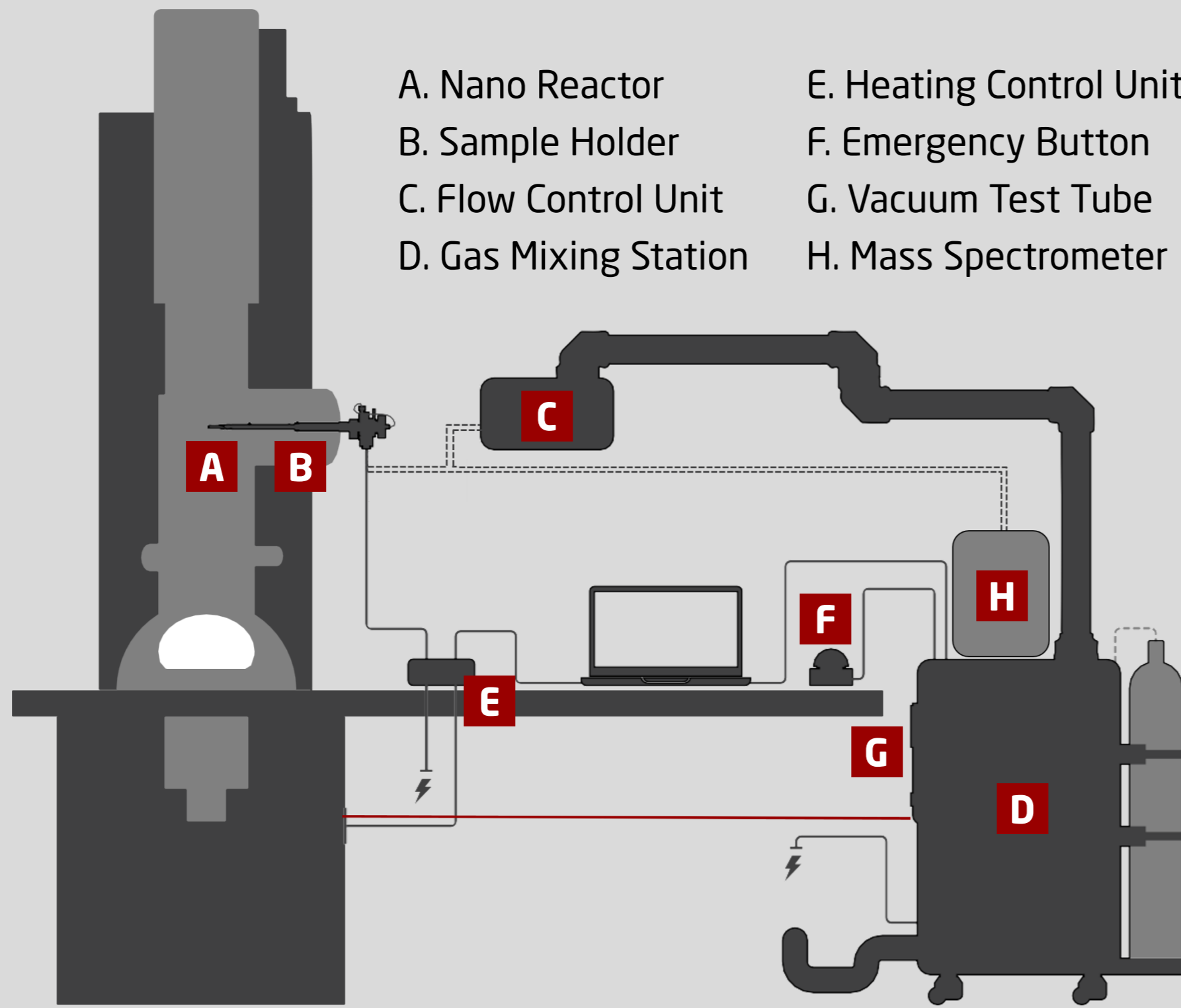


DTU

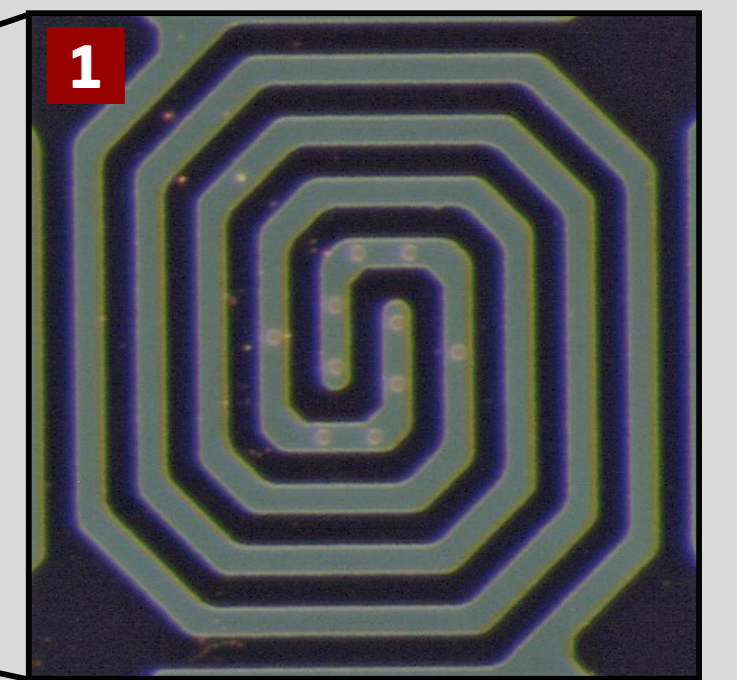
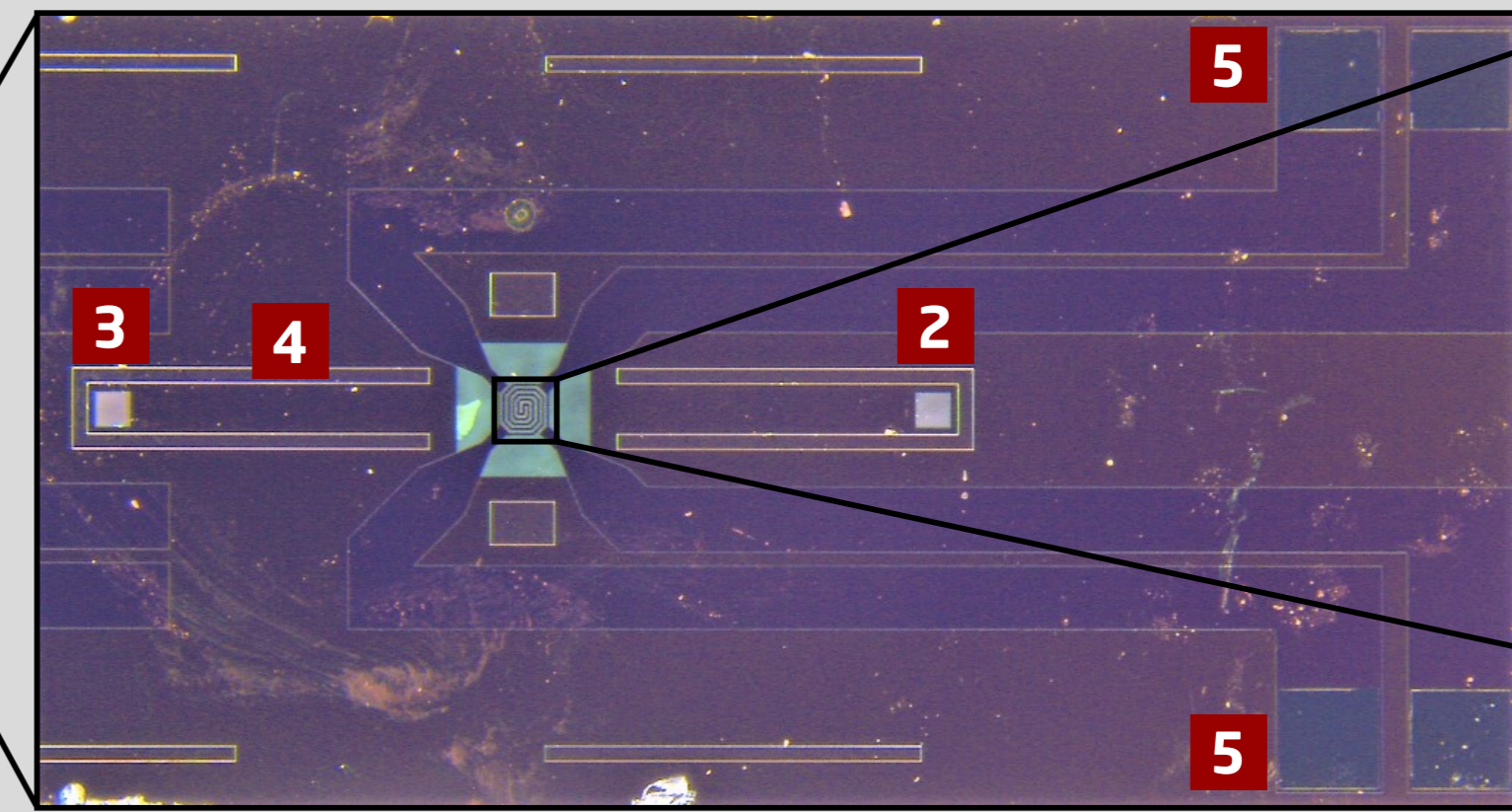


- A. Nano Reactor
- B. Sample Holder
- C. Flow Control Unit
- D. Gas Mixing Station
- E. Heating Control Unit
- F. Emergency Button
- G. Vacuum Test Tube
- H. Mass Spectrometer



Sample Holder

Nano Reactor



- 1. Heating spiral with electron-transparent windows
- 2. Gas inlet
- 3. Gas outlet
- 4. Spacers
- 5. Contact pads

Mass Spectrometer

